



INNOVATE | INTEGRATE | INTERNATIONALIZE

**Connecting Artisans
Innovators & Markets Globally**

Bhagalpur BIHAR

24 JUNE TO 7 JULY



सत्यमेव जयते

**MSME
Ministry of Agriculture
Ministry of Textile
Ministry of Commerce
Ministry of Road (Dpt. of. EV)**

SILK CITY GLOBAL HAAT
& STARTUP BUSINESS CONNECT

OUR SPONSORS



www.silkcityglobalexpo.com

MOB : 9031640241 / 9031640242 / 9031640243



SILK CITY GLOBAL EXPO & STARTUP BUSINESS CONNECT

24th June to 7th July

Sandy's Compound
Bhagalpur, Bihar

Executive Summary

Silk City Global Expo & Startup Business Connect 2026 is proposed to be one of the largest international-level business and startup exhibitions in Bihar. The event will be organized at Sandy's Compound, Bhagalpur, (Bihar).

The expo aims to connect startups, industries, investors, government departments, artisans and consumers on a single platform.

More than 120 startups from across India will participate in the expo, especially those planning to expand their business in Bihar. In addition, around 300 artisans and craftsmen from different sectors such as handicrafts, wooden furniture, textile crafts and traditional industries are expected to participate.

The expo will host approximately 400–430 stalls across different sectors. The event is expected to attract approximately 4.5 to 5 lakh visitors during the entire period.

Who we are ?

The Silk City Global Expo & Startup Business Connect in Bhagalpur, Bihar, is a premier event designed to bridge the gap between traditional craftsmanship and modern entrepreneurial innovation.

Architects of a New Economic Era

Heritage-Driven Innovators

Global Connectors

Visionaries for Bihar

Mission

To empower traditional artisans and nurture emerging startups by providing a dynamic platform for connection, collaboration, and international market access, fostering growth that honors legacy while embracing the future.

Vision

To establish Bhagalpur as a global nexus where rich cultural heritage and cutting-edge business innovation converge, inspiring a sustainable future for artisans and entrepreneurs alike



SILK CITY GLOBAL EXPO & STARTUP BUSINESS CONNECT

24th June to 7th July

Sandy's Compound
Bhagalpur, Bihar

Key Highlights

- 13 Day International Mega Expo
- Venue: Sandish Compound, Bhagalpur
- 120+ Startups from across India
- 100+ msme stalls
- 100+ agriculture and argi-tech business
- 300+ Artisans & Craft Businesses
- 400 – 430 Exhibition Stalls
- Expected Visitors: 4.5 – 5 Lakh
- Participation from multiple industries
- Sector-wise Air Conditioned Exhibition Structures

Participating Sectors

- Startup Innovation Pavilion
- Textile & Bhagalpur Silk Industry
- Agritech & Farming Technology
- Software & IT Companies
- Solar Energy & Renewable Energy
- Power & EV Motors
- Automobile Expo
- Home Appliances
- Banking & Financial Institutions
- Educational Institutions
- Handicrafts & Wooden Furniture
- Restaurant & Food Industry
- Photography & Digital Media Expo

Infrastructure

- Fully Air-Conditioned Modular Stall Structures
- Total Estimated Stalls: 400 – 430
- Sector-Wise Exhibition Zones
- Startup Pavilion (120 Startups)
- Artisan & Craft Pavilion (300 Artisans)
- Business Networking Lounge
- Conference & Seminar Hall
- Product Launch Stage
- Media & Press Conference Area
- Food Court & Visitor Facilities

Expected Impact

- 4.5 – 5 lakh visitors during the expo
- 120+ startups exploring expansion in Bihar
- 300+ artisans showcasing traditional industries
- Strong networking between businesses, startups and investors
- Promotion of Bhagalpur Silk industry
- Economic growth and tourism boost in Bhagalpur





SILK CITY GLOBAL EXPO & STARTUP BUSINESS CONNECT

24th June to 7th July

Sandy's Compound
Bhagalpur, Bihar

Why Bhagalpur ?

Bhagalpur is chosen as the host city because it is the historic "Silk City of India," serving as a critical nexus where centuries of tradition meet modern economic potential.

Historical Legacy: Known as the "Silk City," Bhagalpur's weaving tradition dates back to the Vedic period (1500–500 BCE) and was a major trade center as far back as the Maurya age.

Unique Craftsmanship (Tussar Silk): The region is world-renowned for Tussar silk (or "Peace Silk"), which is produced ethically by allowing silkworms to naturally leave their cocoons before processing.

Geographical Indication (GI) Status: In 2013, "Bhagalpur Silk" earned a prestigious GI Tag, legally protecting it as a unique cultural and intellectual asset of the region.

Economic Heartland: Bhagalpur is the second-largest silk-producing cluster in India after Karnataka. It supports over 35,000 weavers and 25,000 looms, with an annual trade exceeding ₹100 crore.

Global Export Hub: Roughly 50% of Bhagalpur's silk products are exported to international markets, including the U.S., Japan, and Europe, where they are featured in major global fashion weeks





SILK CITY GLOBAL EXPO & STARTUP BUSINESS CONNECT

24th June to 7th July

Sandy's Compound
Bhagalpur, Bihar

Focus Sector

Startups & Innovation Agriculture & Allied Sectors

- Exhibiting modern agricultural machinery and smart farming techniques to enhance crop yield.
- Promoting agro-based startups that focus on animal husbandry, fishery, and dairy development
- Focusing on AI-driven solutions, digital transformation, and sustainable business models.



Automobile & EV Industry

- Highlighting the shift toward green energy through Electric Vehicles (EV) and auto-component manufacturing.
- Creating a platform for investors to explore the emerging charging infrastructure

Textile & Leather Goods

- Showcasing the world-renowned Bhagalpuri Silk and handloom products to international buyers.
- Empowering local weavers & manufacturer through direct e-commerce integration and global trade links.



Banking, Education & Solar tech

Promoting Financial Inclusion & Startup Funding
Showcasing Smart Learning & EdTech Innovation



SILK CITY GLOBAL EXPO & STARTUP BUSINESS CONNECT

24th June to 7th July

Sandy's Compound
Bhagalpur, Bihar

Focus Sector

MSME

Enhancing Market Access & Global Scale:
Connecting local small-scale manufacturers, artisans, and traders directly with international buyers, e-commerce giants, and modern supply chains to scale their business globally.



Khadi

Empowering Rural Artisans & Digital Growth:
Driving economic independence for rural weavers and craftspeople by integrating traditional production methods with modern e-commerce platforms and direct global supply networks.

Nabard

Empowering Rural Micro-Enterprises & Off-Farm Sectors:
Providing financial backing, refinance facilities, and structural credit support to Self-Help Groups (SHGs), Joint Liability Groups (JLGs), and rural artisans to transition traditional crafts into viable commercial startups.



NHDC

Expanding Market Linkages & Digital Infrastructure:
Empowering the handloom ecosystem by providing direct access to national expos, promotional branding (like the India Handloom Brand), and transparent e-governance tools like the e-Dhaga mobile app.



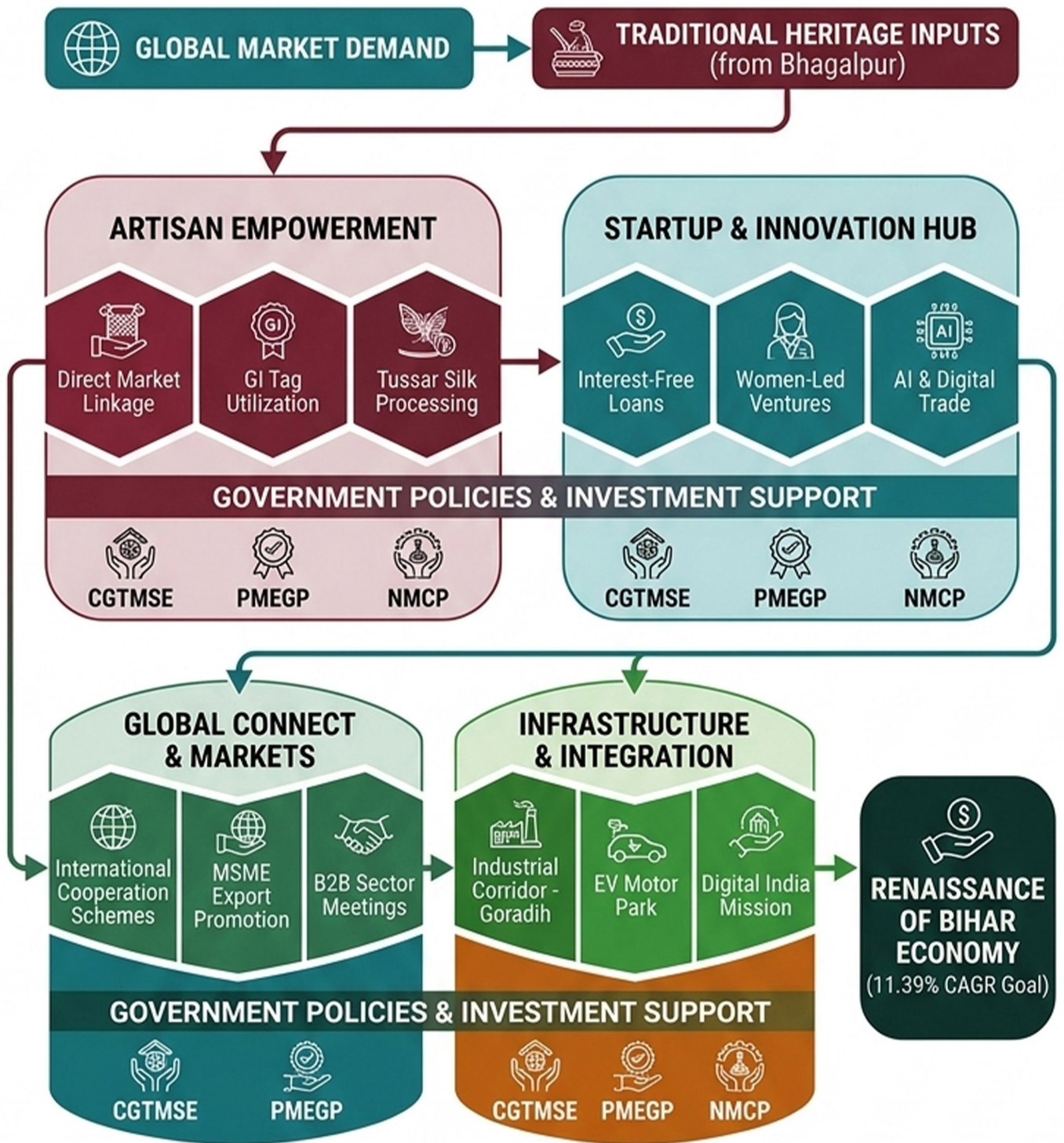
SILK CITY GLOBAL EXPO

& STARTUP BUSINESS CONNECT

24th June to 7th July

Sandy's Compound
Bhagalpur, Bihar

SILK CITY GLOBAL EXPO 2026: INNOVATION & CONNECT



Office

Main Entrance

1 2 3 4 5 6 7 8 9 10 11 12 13 14 15 16 17 18 19 20

Food stall

Entrance
for Members Only

1 2 3 4 5 6 7 8 9 10 11

1	2	1	2	1	2	1	2	1	2
3	4	3	4	3	4	3	4	3	4

AUTOMOBILE & EV INDUSTRY

1	2	1	2	1	2	1	2	1	2
3	4	3	4	3	4	3	4	3	4

Automobile :
CAR/BIKE With Platform / Ramp
spot light with carpt & 6x6 Canopy

RENT :

CAR : 2,50,000

BIKE : 1,50,000

stage

Startup
Agriculture Startup
& Allied sector

International, Textile
Lifestyle, Interior & Furniture

MSME

KHADI
& NABARD

1
2
3
4
5
6
7
8
9
10
11
12
13
14
15
16
17
18
19
20
21
22

1	2	3	4	5	6	7	8	9	10	11	12	13	14	15	16
61	60	59	58	57	56	55	54	53	52	51	50	49			17
36	37	38	39	40	41	42	43	44	45	46	47	48			18
															19
35	34	33	32	31	30	29	28	27	26	25	24	23	22	21	20

1	2	3	4	5	6	7	8	9	10	11	12	13	14	15	16
61	60	59	58	57	56	55	54	53	52	51	50	49			17
36	37	38	39	40	41	42	43	44	45	46	47	48			18
															19
35	34	33	32	31	30	29	28	27	26	25	24	23	22	21	20

1	2	3	4	5	6	7	8	9	10	11	12	13	14	15	16
61	60	59	58	57	56	55	54	53	52	51	50	49			17
36	37	38	39	40	41	42	43	44	45	46	47	48			18
															19
35	34	33	32	31	30	29	28	27	26	25	24	23	22	21	20

1	2	3	4	5	6	7	8	9	10	11	12	13	14	15	16
61	60	59	58	57	56	55	54	53	52	51	50	49			17
36	37	38	39	40	41	42	43	44	45	46	47	48			18
															19
35	34	33	32	31	30	29	28	27	26	25	24	23	22	21	20

STALL DETAILS-

Built Up Space each Stall
Size (3x3 Mtrs)

1. Furnished Stall Rent - Rs. 105,000/- (Fixed) (Gst Extra)
2. Open Hut Stall Rent - Rs. 90,000/-
3. Non AC Stall Rent - Rs. 55,000/-

FACILITIES :

- 2 No. Of Counter
- 2 No. Of Chair
- 1 No. Of Power Plug Point
- Flooring & Carpet
- Air Conditioner (Event Time)
- 24 Hrs Fire Fighting Equipment
- 24 Hrs General Security

FOOD STALL DETAILS :

- Stall rent 105,000
- Stall Size 15sft x 10sft
- Flooring & Carpet
- Light & Fan
- Power Plug Point
- 1no. of Counter
- 2nos. of Chair
- Cooking Space
- Water
- Dinning
- Dustbin
- 24 Hrs. General Security
- Fire Fighting Equipment
- Stall Price : (GST Extra)

Mob : 9031640241, 9031640242, 43, 44

Name : SILK LOOM INDIA LLP

ACC.NO - 50200092847919 IFSC - HDFC0009287

BANK - HDFC

BRANCH - NATHNAGAR